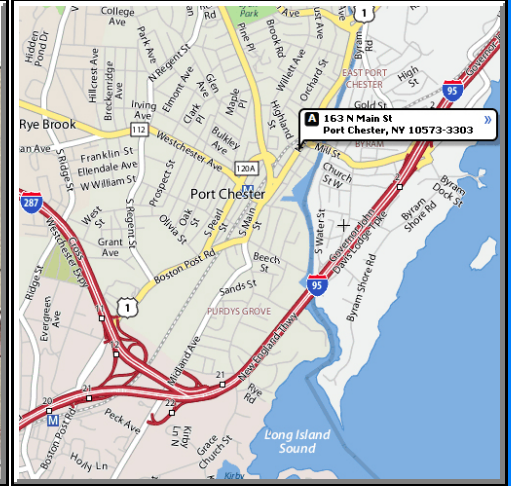


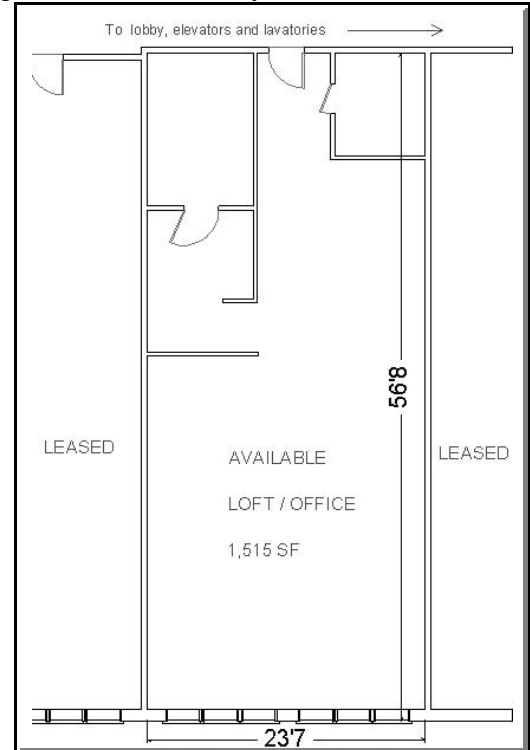
Port Chester - For Lease



163 NORTH MAIN STREET (US Rte. 1) Port Chester, NY

Located in the central retail area of Port Chester and within walking distance to the train station, public and private marinas and the newly enhanced shopping area with its wide variety of restaurants. Port Chester is also a roadway transportation hub served and bordered by I-95, I287, Westchester Avenue and King Street (Rte 120). Also, in this same block is the Mario Batali signature restaurant, The Tarry Lodge and, his soon to open new addition, a large international market featuring a variety of dried meats, homemade breads and wines. There is plenty of municipal parking available in nearby lots.

- Building Size:** 30,000 SF on 2 floors
- Available Space:** 1,515 SF
2nd Floor
- Occupancy:** Immediate
- Rent:** \$20.00 /SF + Electric / CAM
- Amenities:** Elevator Lobby
High Ceilings
Operable Windows
Hardwood floors



TEDESCO
REALTY ASSOCIATES

Please call Michael Tedesco
(203) 531-5939

View our listings online:
www.TedescoRealty.com
Fax: (203) 531-4757
E-mail: Contact@TedescoRealty.com
P.O. Box 31066 Greenwich, CT 06831