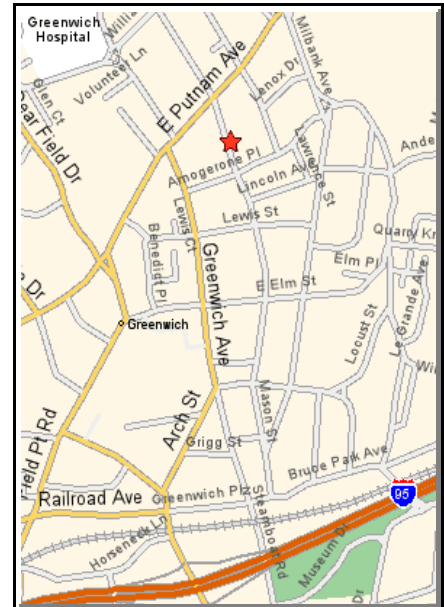


# Greenwich - For Lease

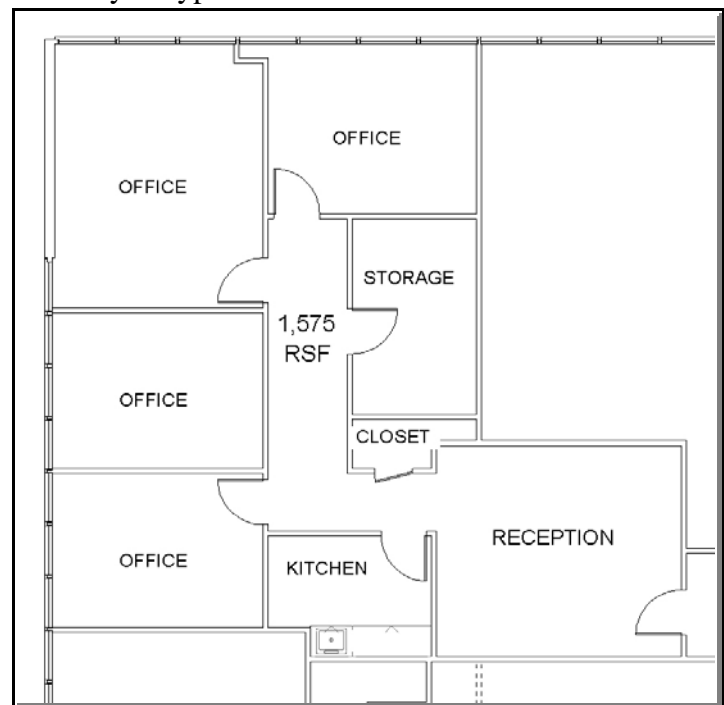
## PRIME DOWNTOWN OFFICE SPACE



35 MASON STREET  
Greenwich, CT

This first class, fully modernized and full service office building is prominently located at the top of Mason Street, next to the newly expanded YMCA, across from Pickwick Plaza and 1 block from Greenwich Avenue. Ample on-site parking in the garage. The available space, located on the second floor, is in “move-in” condition and configured for a variety of typical office uses.

**Building Size:** 40,000 SF - 4 Floors  
**Available Space:** 1,575 SF - 2<sup>nd</sup> Floor  
**Occupancy:** 90 days  
**Rent:** \$Market + Elect.



**TEDESCO**  
REALTY ASSOCIATES

Please call Michael Tedesco  
(203) 531-5939

View our listings online:  
[www.TedescoRealty.com](http://www.TedescoRealty.com)  
Fax: (203) 531-4757  
E-mail: [Contact@TedescoRealty.com](mailto:Contact@TedescoRealty.com)  
P.O. Box 31066 Greenwich, CT 06831